

# PRODUCT DATA SHEET

## Momentum 8mm Sliding Door 1700mm

Product Code: MO-DOOR-1700-P1 / MO-DOOR-1700-P2



**SCUDO**  
BEAUTIFUL BATHROOMS

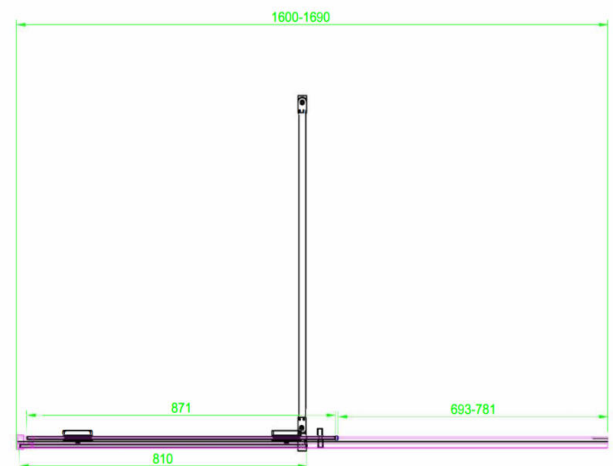
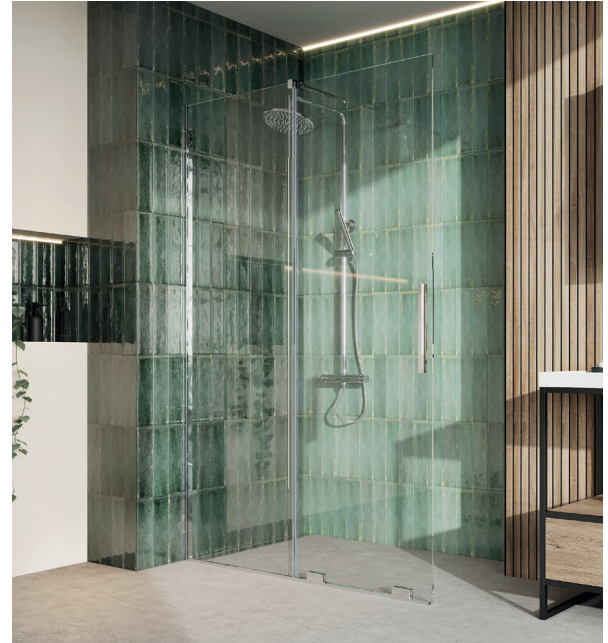
0330 124 7290

sales@scudo.co.uk - www.scudo.co.uk

Scudo is the trading name of Harrison Bathrooms Ltd. Whilst we endeavour to ensure that the product information is accurate we accept no liability for any information given. All images are for illustration purposes only. Product images and specification are subject to change. Measurement are in millimetres and are nominal.

|                                      |                                  |
|--------------------------------------|----------------------------------|
| Product Name                         | MO-DOOR-1700                     |
| Product Description                  | Momentum 8mm Sliding Door 1700mm |
| Product Transportation               |                                  |
| Barcode                              | 5060991250421                    |
| Country of origin                    | CH                               |
| Commodity code                       | 7610100000                       |
| Product Measurements - PACK 1        |                                  |
| Product Weight (KG)                  | 31.5                             |
| Product Width (mm)                   | 1500-1590                        |
| Product Height (mm)                  | 2000                             |
| Product Depth (mm)                   | 8                                |
| Primary Packed Measurements - PACK 1 |                                  |
| Packaged Weight                      | 33.25                            |
| Packed Height                        | 2068                             |
| Packed Width                         | 835                              |
| Packed Length                        | 48                               |
| Product Measurements - PACK 2        |                                  |
| Product Weight (KG)                  | 31.5                             |
| Product Width (mm)                   | 1500-1590                        |
| Product Height (mm)                  | 2000                             |
| Product Depth (mm)                   | 8                                |
| Primary Packed Measurements - PACK 2 |                                  |
| Packaged Weight                      | 33.25                            |
| Packed Height                        | 2064                             |
| Packed Width                         | 896                              |
| Packed Length                        | 48                               |

|                          |              |
|--------------------------|--------------|
| General Information      |              |
| Construction Material    | Glass        |
| Installation type        | Wall Mounted |
| Colour / Finish          | Clear glass  |
| Enclosure Attributes     |              |
| Adjustment               | 1600-1690    |
| Toughened Glass          | Yes          |
| Aqua-Shield (easy clean) | Yes          |
| Hinge Type               | Sliding      |
| Door Type                | Single       |
| Frame Type               | Frameless    |
| Glass Type               | Clear        |
| Radius                   | N/a          |
| Entry Width              | 693-781      |
| Door in swing (°)        | N/a          |
| Door Out Swing (°)       | N/a          |
| Enclosure Shape          | Straight     |
| Glass Thickness (mm)     | 8mm          |
| Profile Finish / Colour  | N/a          |
| Profile Material         | N/a          |



## Dimensions

(measurements in mm)



### LIFETIME GUARANTEE

We are confident in our products and we want our customer to be, we proudly give a lifetime guarantee on our taps and showers, further details can be found on our website